



ECH900

High resolution inkjet printer



High resolution inkjet printer



ECH900

High resolution inkjet printer



Barcode Coding

- Print speed up to 120m/min (150DPI), Max 12.7mm for Single Printhead, High Quality with High Resolution and precise printing.
- Support Multiple system fonts: Windows TrueType font, Logo (BMP/PNG/JPEG), Barcode, 2D barcode.
- Huge Message/Job storage.
- Flexible message/job content editing.
- Minimum maintainance needed. Low total cost of ownership.
- Various Models/options available. Superior print capability.
- Support Multiple head seamless message Stitching capability.
- Simple operation and easy installation.



CARTRIDGES

● EC001M(272)

Black color solvent-based, excellent adhesion and rub resistance, longer decap time, better blackness and sharpness of graphics, and can dry extremely quickly on non-porous substrates

● EC001M(270)

Black color solvent-based, excellent adhesion and rub resistance, decap time>120mins, better blackness and sharpness of graphics, fast drying, can spray to longer distance

● EC001M(273)

Black color solvent-based, better adhesion and rub resistance, decap time >120mins, ultra-high blackness and sharpness of graphics, fast drying, suitable to wider range of working environment

● EC001M(274)

Green color solvent-based, excellent graphics sharpness, enhanced decap time, good fade resistance on non-porous substrates

● EC001M(275)

Cyan color solvent-based, excellent graphic sharpness, good adhesion and fade resistance on non-porous substrates.

● EC001M(276)

Blue color solvent-based, provides an eye-catching color, has excellent graphic sharpness and fast drying performance on non-porous substrates.

● EC001M(277)

Red color solvent-based, can be used immediately, has excellent graphic sharpness and fast drying performance on non-porous substrates

● EC001M(278)

Orange color solvent-based, can be used immediately, has excellent graphic sharpness and fast drying performance on non-porous substrates.

○ EC001M(271)

Orange color solvent-based, can be used immediately, has excellent graphic sharpness and fast drying performance on non-porous substrates.

● EC001M(990)

Black color solvent-based, excellent light resistance, water resistance, heat resistance, longer decap time, better blackness and sharpness of graphics, and can dry extremely quickly on non-porous substrates

● EC001M(799)

Blue solvent-based

● EC001M(324)

Yellow solvent-based

● EC001M(247703S)

Black color solvent-based, fast drying, strong adhesion

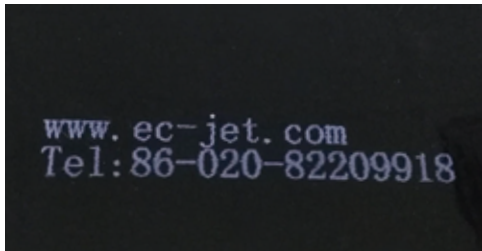
● EC001M(285)

Black color solvent-based, excellent adhesion and high resistance, longer decap time, better blackness and sharpness of graphics, and can dry extremely quickly on non-porous substrates

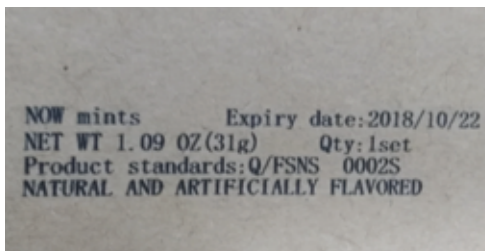
▲ The above are partial of our models and specifications



QR coding



name coding



diamension and parameter coding



other information coding



logo coding

Excellent EC-JET, Intelligent Choice

Model	ECH901	ECH902	ECH903	ECH904
Print Height	0-12.7mm	0-25.4mm	0-38.1mm	0-50.8mm
Lines of Print Supported	Multiple lines within printable area			
Dynamic Data	Communication, barcode/2D barcode text, variable barcode/2D barcode			
Printer Features				
Print Speed	120M/min (150DPI)			
Data Supported	Text,Time,Date,Sequential Number,Logo,linear barcode,2D barcode			
Fonts Supported	Windows font,TrueType font,Logo(BMP/PNG/JPEG),Barcode,2D barcode			
Message Length	20inch.Extendable			
Printer Memory	2GB			
OS	Proprietary			
External I/O	Standard USB Host, remote communication			
Physical Features				
Environment	10~80%Temp.:10-40℃, Humidity:10-80%			
EMI Compliance	EN55011:2009+A1:2010,EN61326-1:2013,EN61000-3-2:2014,EN61000-3-3:2013			
Cartridge lifetime	Up to 1.5 billion dots (42ml ink cartridges), about 385 thousand 12.7 mm characters			
Printing Material	Porous, Semi Porous, and Non Porous surface, like Face mask, wood, carton box, building material			
Power Supply	110V-240VAC,50/60Hz			
Power Rating	<60w			

*Maximum print speed subjected to print resolution.

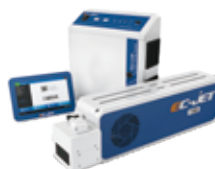
**Please consult EC-JET for more information.



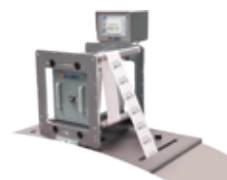
Continuous Ink-jet Printer



Large Character Ink-jet Printer



Laser Coding System



Thermal Transfer Printer



Consumable



GUANGZHOU EC-PACK PACKAGING EQUIPMENT CO.,LTD.

Address:No.16 Huang Qi Shan Road,Yong He
Economic Zone,GETDD,Guangzhou,China.
Tel:+86-20-82209518 Fax:+86-20-82209511
<http://www.ec-jet.com>
E-mail:market@ec-jet.com

Pharmapack Technologies Corporation

Address:No.16 Huang Qi Shan Road,Yong He
Economic Zone,GETDD,Guangzhou,China.
Tel:+86-20-82215907 Fax:+86-20-82213367
<http://www.pppharmapack.com>
E-mail:market@pppharmapack.com

Pharmapack North America Corporation

Address:2860 East White Star Ave. Anaheim,
CA 92806
Tel:+1 909 390 1888
Fax:+1 909 390 5388

Pharmapack Europe S.R.L.

Address:Via Molino Rosso 10F
40026 Imola(BO)Italy
Tel:+39 0542 1890315
Fax:+39 0542 1890314

Pharmapack Technologies (India) Private Limited

Address:206,2nd Floor Srinivasa Tower
Adjacent Hotel ITC Kakatiya,
Hyderabad - 500016,Telangana